

COMMUNITY MEMORIAL MUSEUM

1333 Butte House Road

P. O. Box 1555

Yuba City, CA 95991

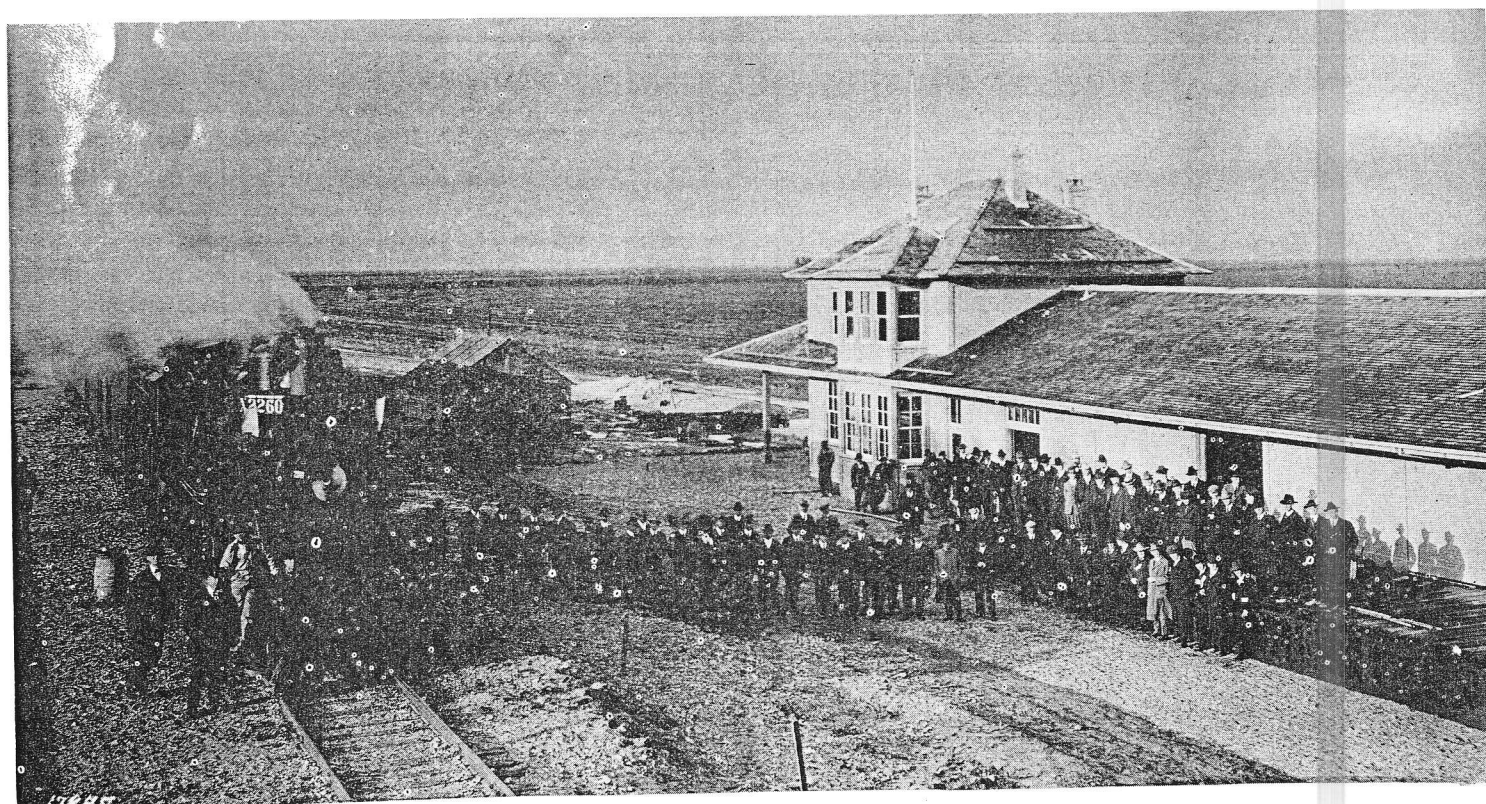
# SUTTER COUNTY HISTORICAL SOCIETY

## NEWS BULLETIN

VOL. 1. NO. 9

YUBA CITY, CALIFORNIA

APRIL, 1957



FIRST TRAIN INTO ROBBINS (FORMERLY MADDOCK) AFTER THE RECLAMATION OF SUTTER BASIN.  
DECEMBER 18, 1920

\*\*\*\*\*

SPRING MEETING

SUTTER COUNTY HISTORICAL SOCIETY

APRIL 16, 1957 - 7:30 P.M.

Chambers of the Board of Supervisors

BUSINESS MEETING

President, Mrs. Honora Laney

PROGRAM

Chairman: Randolph Schnabel

Speaker: Dr. Clarence F. McIntosh

Assistant Professor of History

Chico State College

Subject: Miners vs Farmers

The Hydraulic Mining Controversy

\*

\*\*\*\*\*

THE EARLY TRAVELED ROADS OF SUTTER COUNTY

By Bert Ullrey

Chairman  
Committee on Old Roads

While not attaining the results desired it has been my aim to make it as complete as possible.

To begin, the first mode of transportation was by boat from Sacramento to Nye's Ranch which is Marysville.

In the year 1843 a ferry was built by order of Captain Sutter. The ferry crossed the Feather River at the town of Nicolaus. From this location the road went North along and near the present road. The first stop was Hock Farm. Then the road continued North along the river to Yuba City.

Several short roads went West from this main road, as they were used mainly to haul wood and hay to the settlements. The wood was used for fuel for the boats and the hay was traded or sold to the miners for their pack mules.

## The Early Traveled Roads of Sutter County - cont.

From Yuba City the road was directed West on what is now Bridge Street, then, North on what is now Plumas Street, then West to what is now Onstott Road, then one-half mile North to Butte House Road which goes West to Sutter.

The roads forked at Sutter. One road went to Stohlman's near the Long Bridge, but the main road, the South Butte Pass Road, went to West Butte. It was necessary to cross the Butte Slough by ferry and then proceed West to the Sacramento River where the stage crossed the Sacramento River by ferry. This ferry was called Winter's Ferry and was later known as Moon's Ferry. There was no road to Meridian as they obtained their mail from Colusa.

About one mile East of West Butte the road forked. One road going North through the low hill, coming out at the little place called Noyesburg. This was to avoid the high water that prevailed between West Butte and Noyesburg in the winter months. This road continued around the Buttes to Pennington and then to Live Oak. The road was just about in the same location as it is at present.

Another road which was traveled a great deal went West from Tudor across the tule to Kirksville. Again it was necessary to cross by ferry to continue to San Francisco.

District Number 70 was reclaimed in 1867 and a bridge was built one thousand seven hundred and sixty feet long at a cost of \$10,000 near the Long Bridge at the Stohlman place. Some of the old piling is still standing. This road changed the mail route to Meridian from Sutter.

In the year 1850 a ferry was built just South of the Yuba River which was used to cross to Yuba City. Later in 1853 a toll bridge was built near where the Fifth Street Bridge was located. This bridge washed out in 1861.

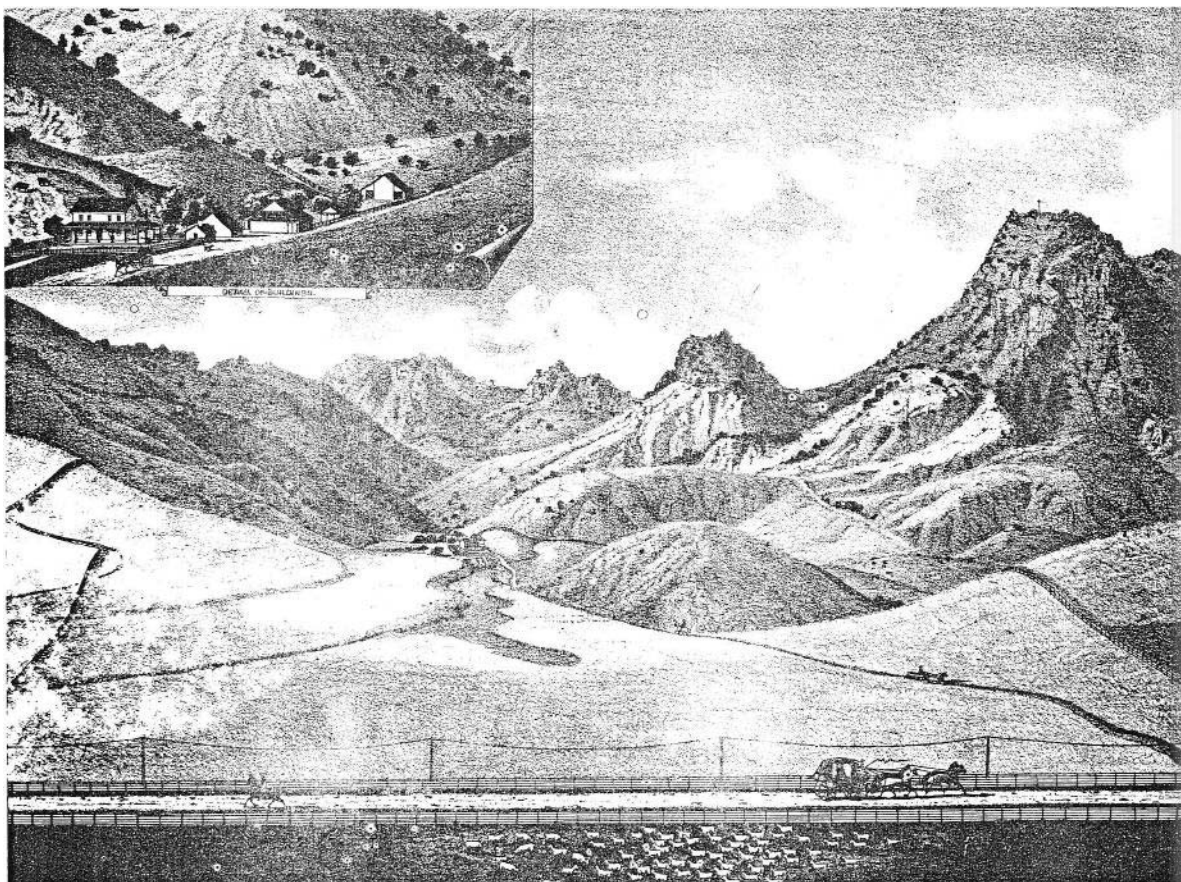
The road from Yuba City to Live Oak forked off Butte House Road and continued North near the Stafford and Bihlman Ranches or may be located as Larkin Road.

A ferry was also placed at the town of Knights Landing.

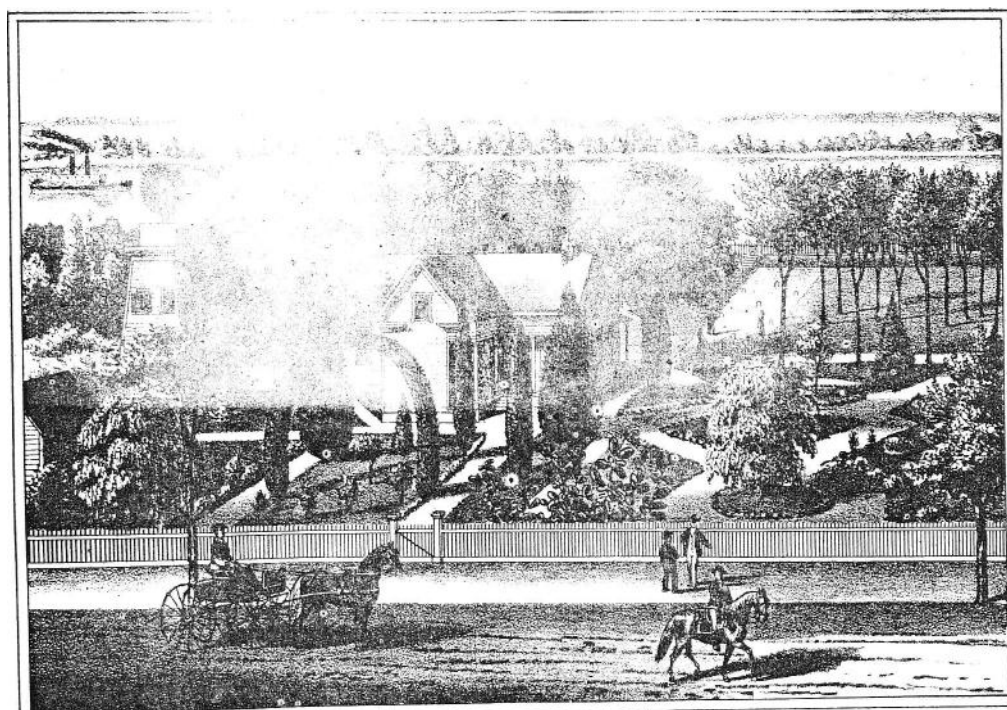
Also a road led off from the Butte House Road and entered a canyon on the East side and led into the hills where large religious meetings were held. These were known as "Camp Meetings".

Very few of the roads were graded and were very muddy in the winter. Some were closed because of high water. The roads went in many directions, but in later years they were surveyed and kept in line.



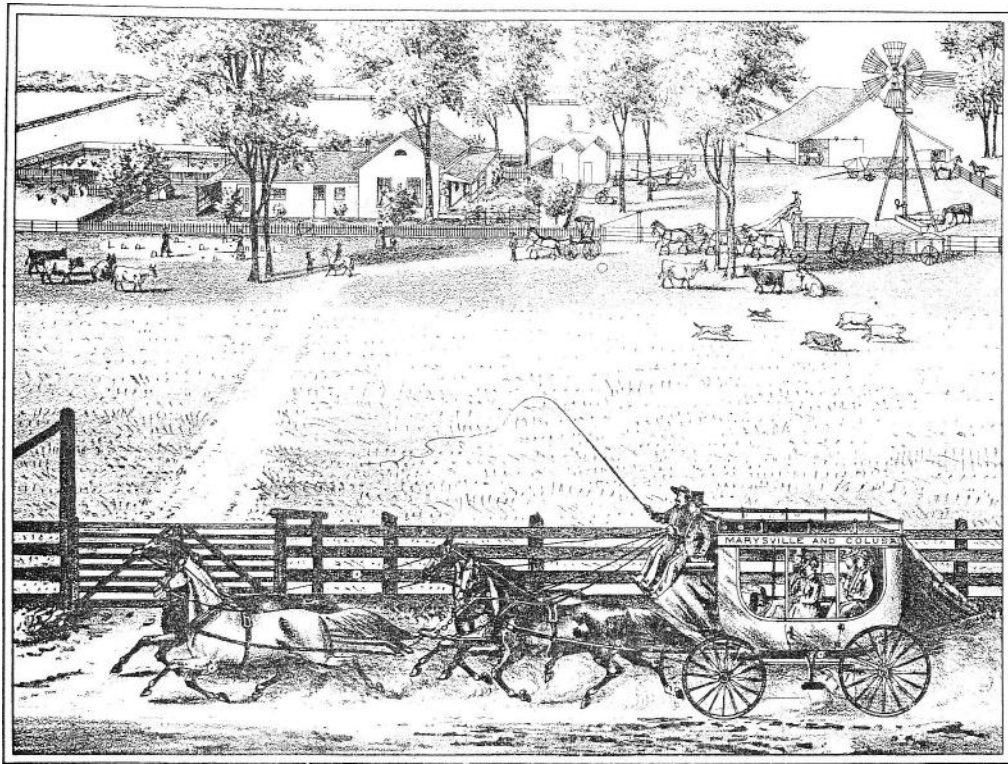


RANCH AND RESIDENCE OF WM. VANFLEET, WEST BUTTE, SUTTER CO. CAL

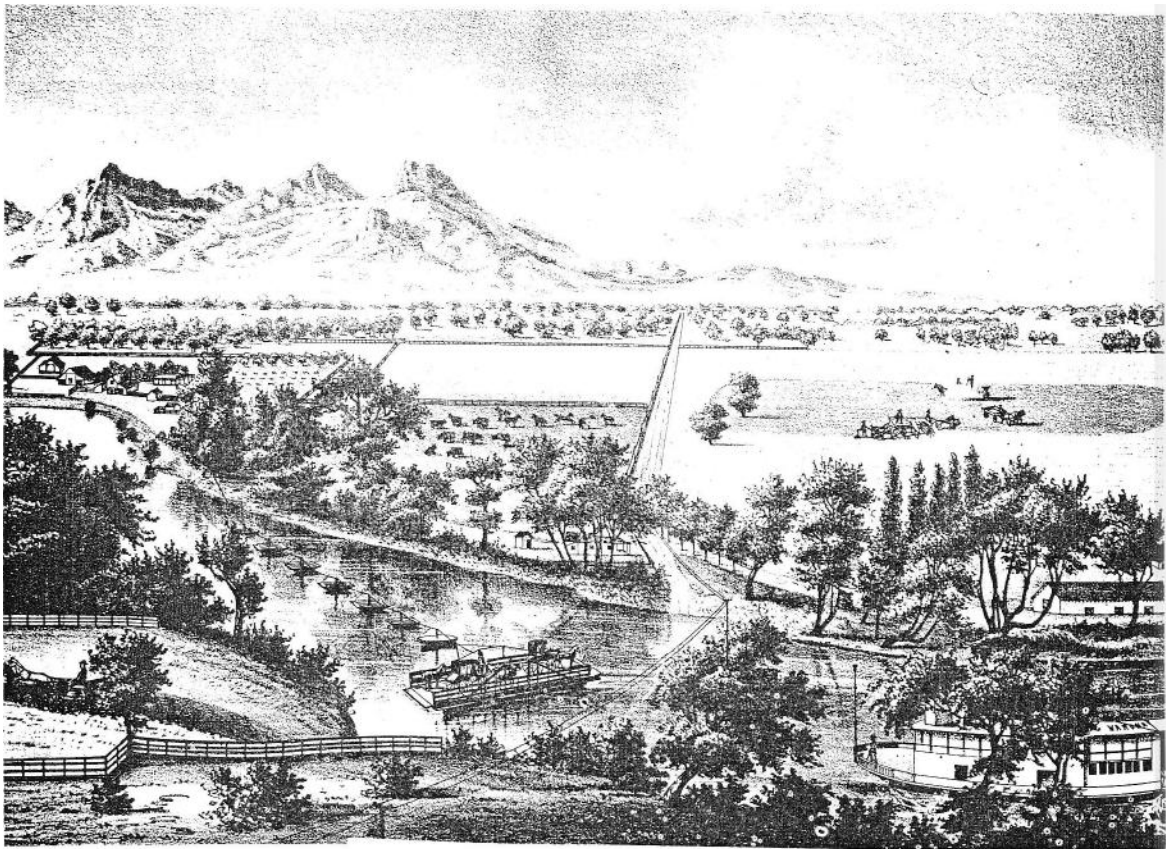


RESIDENCE OF MRS. A. ARENS, NICOLAUS, SUTTER CO. CAL.  
FIRST COURT HOUSE IN SUTTER COUNTY





A VIEW ON THE "NIESEN PLACE" THE RESIDENCE OF MRS. CATHARINE PHITZENREITER.  
320 ACRES, 10 MILES WEST OF YUBA CITY, SUTTER CO. CAL.



MOEN'S FERRY,  
AS SEEN FROM WEST SIDE OF SACRAMENTO RIVER, SUTTER CO. CAL.